



कर वै नि  
ESIC  
कर्मचारी राज्य बीमा निगम  
Employees' State Insurance Corporation

# Accessibility and security of Monthly Contribution (SBI Net Banking)

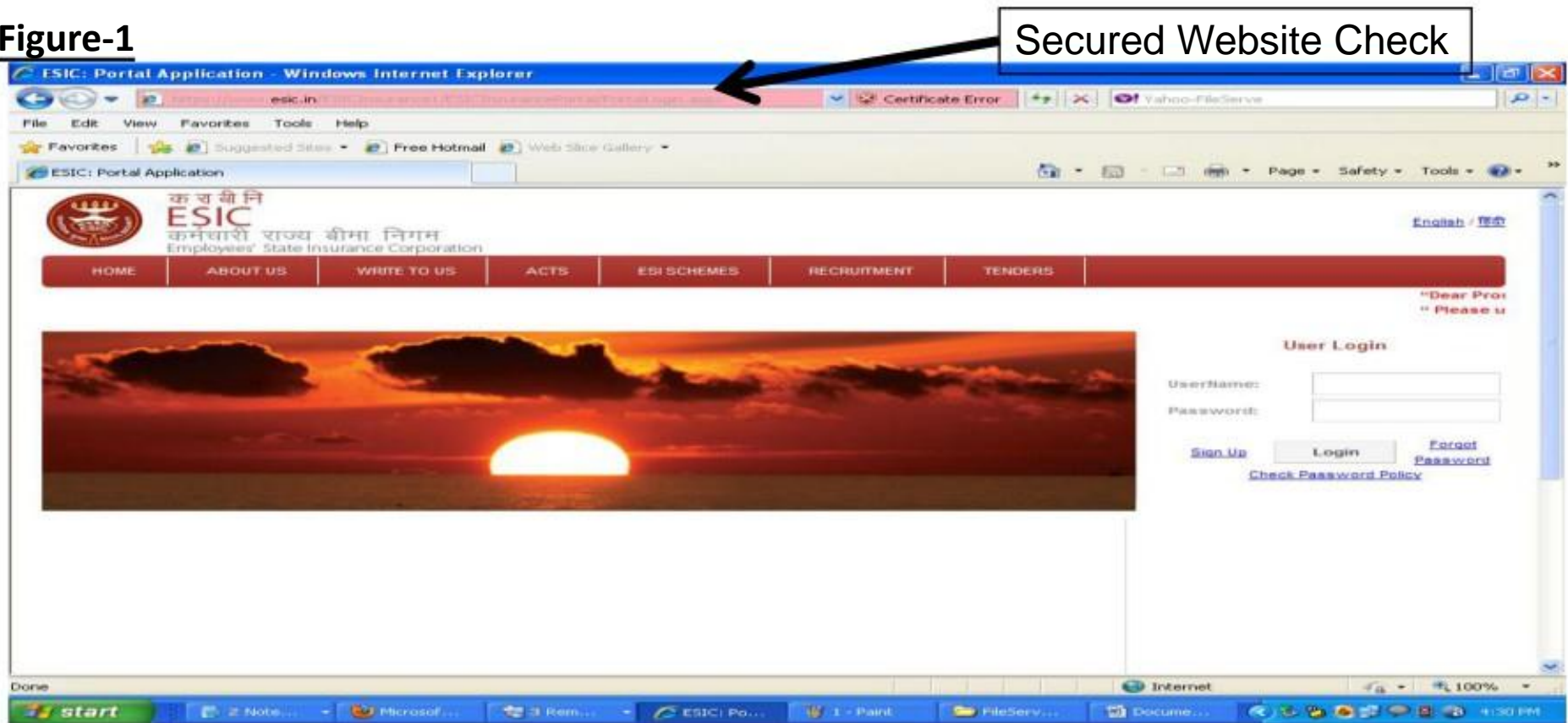
- Users are advised to read the Accessibility and security help file before generating online Challans.
- Online Payment is enabled for SBI account holders with Net Banking facilities.
- Please follow the below steps before submission of contribution and generation of Challan
  1. [Click here](#) for Install Security Certificates - *Must if Employer wishes for making payment through SBI payment gateway.*
  2. [Click here](#) for adding exceptions in Mozilla Firefox
  3. [Click here](#) for adding exceptions in Internet Explorer

# ESIC Website

1. Users are advised to use following browsers for online transactions
  1. Mozilla Firefox 3.8 and above.
  2. IE 7.0 and above.
2. Please type [www.esic.in](http://www.esic.in) in the “address bar”. The page will automatically convert to

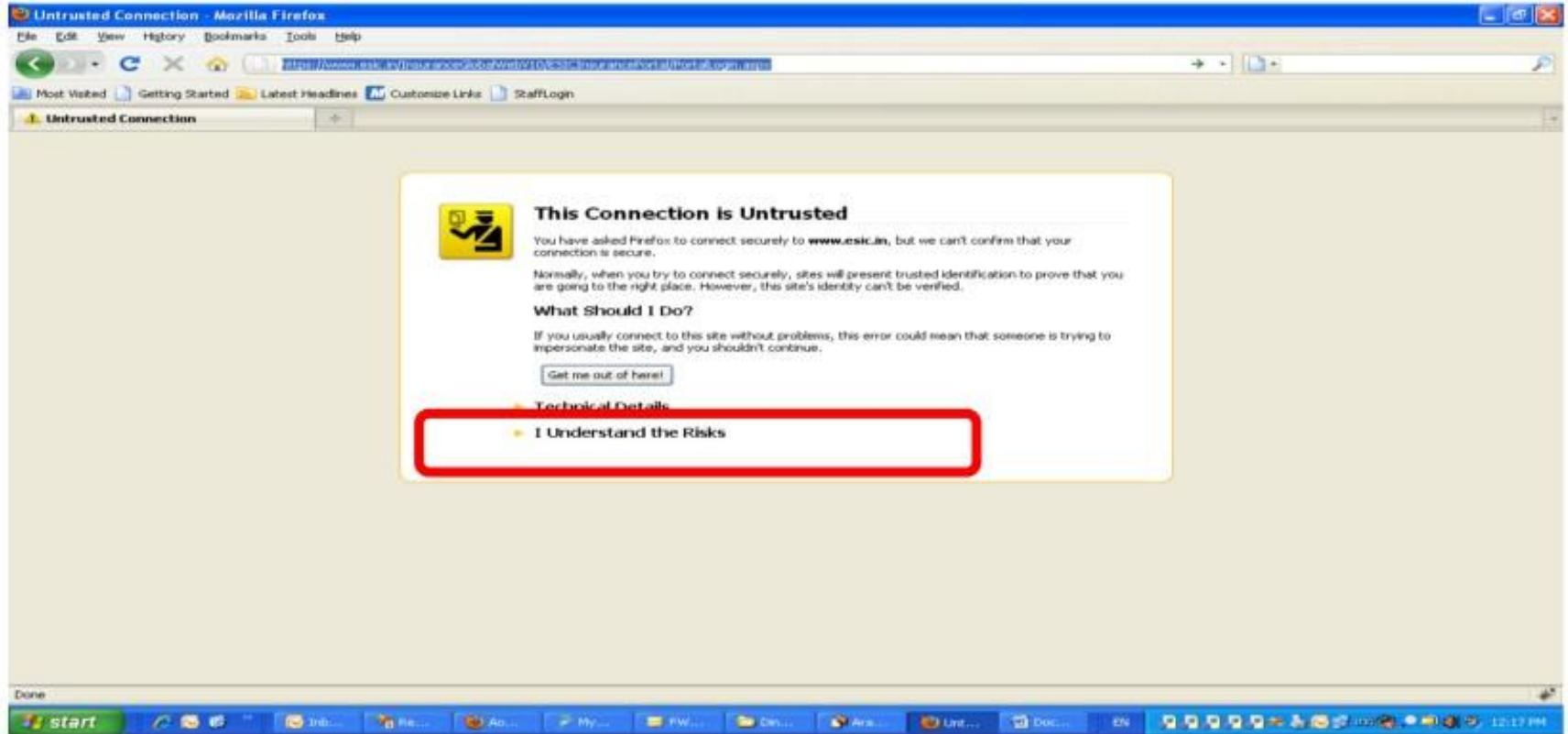
<https://www.esic.in/ESICInsurance1/ESICInsurancePortal/PortalLogin.aspx>  
as given in Figure 1 below

Figure-1



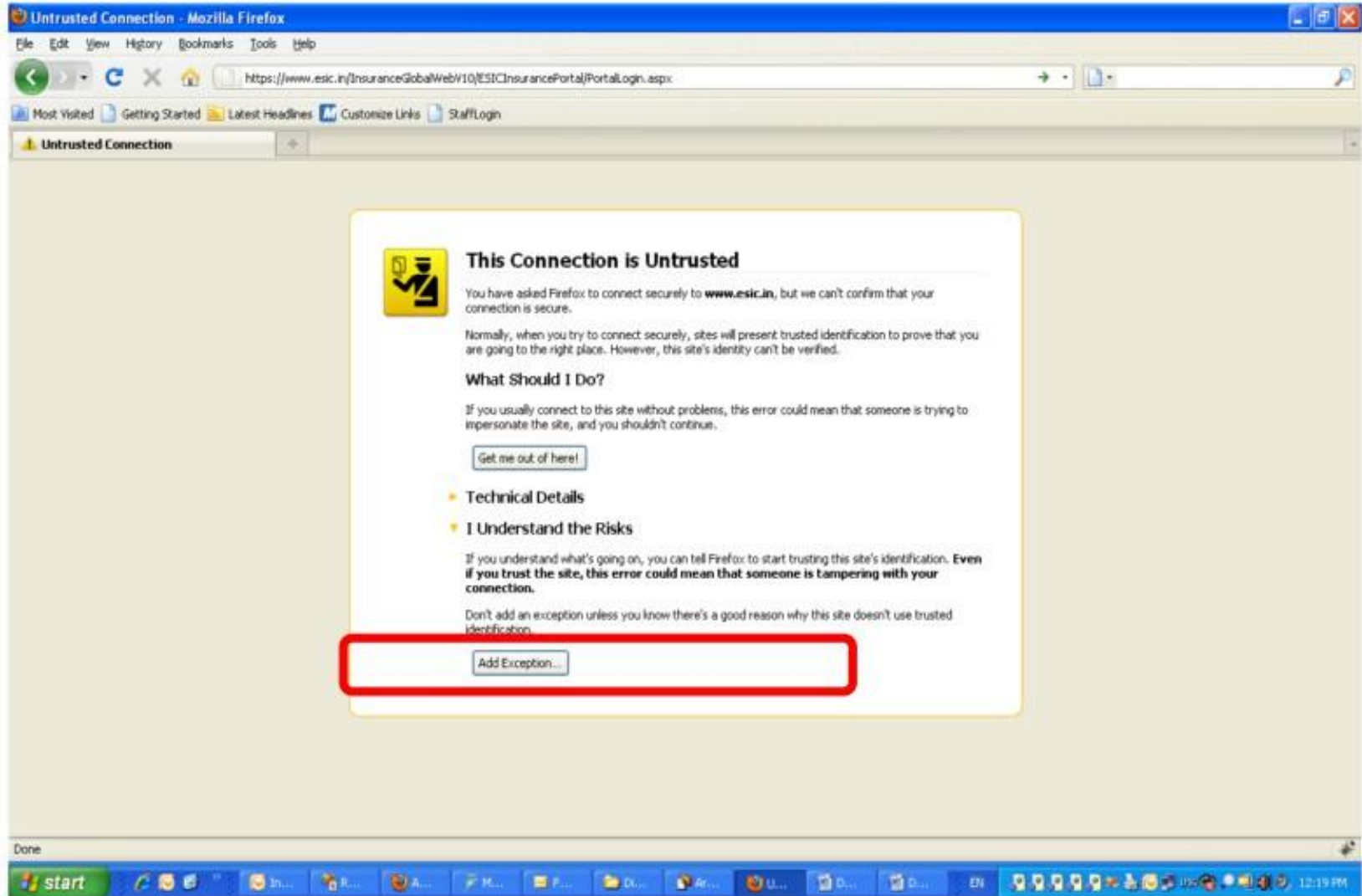
## Steps for Adding security exception in MOZILLA FIREFOX browser.

- If user is facing Untrusted Connection after entering [www.esic.in](http://www.esic.in)
- Please find the figure below to add security exception
- The below process should be followed for following links as well
  - **Generation of Challan**
  - **File Monthly Contribution and**
  - **OnlineChallanDouble Verification**
- Click on “I understand the Risks”



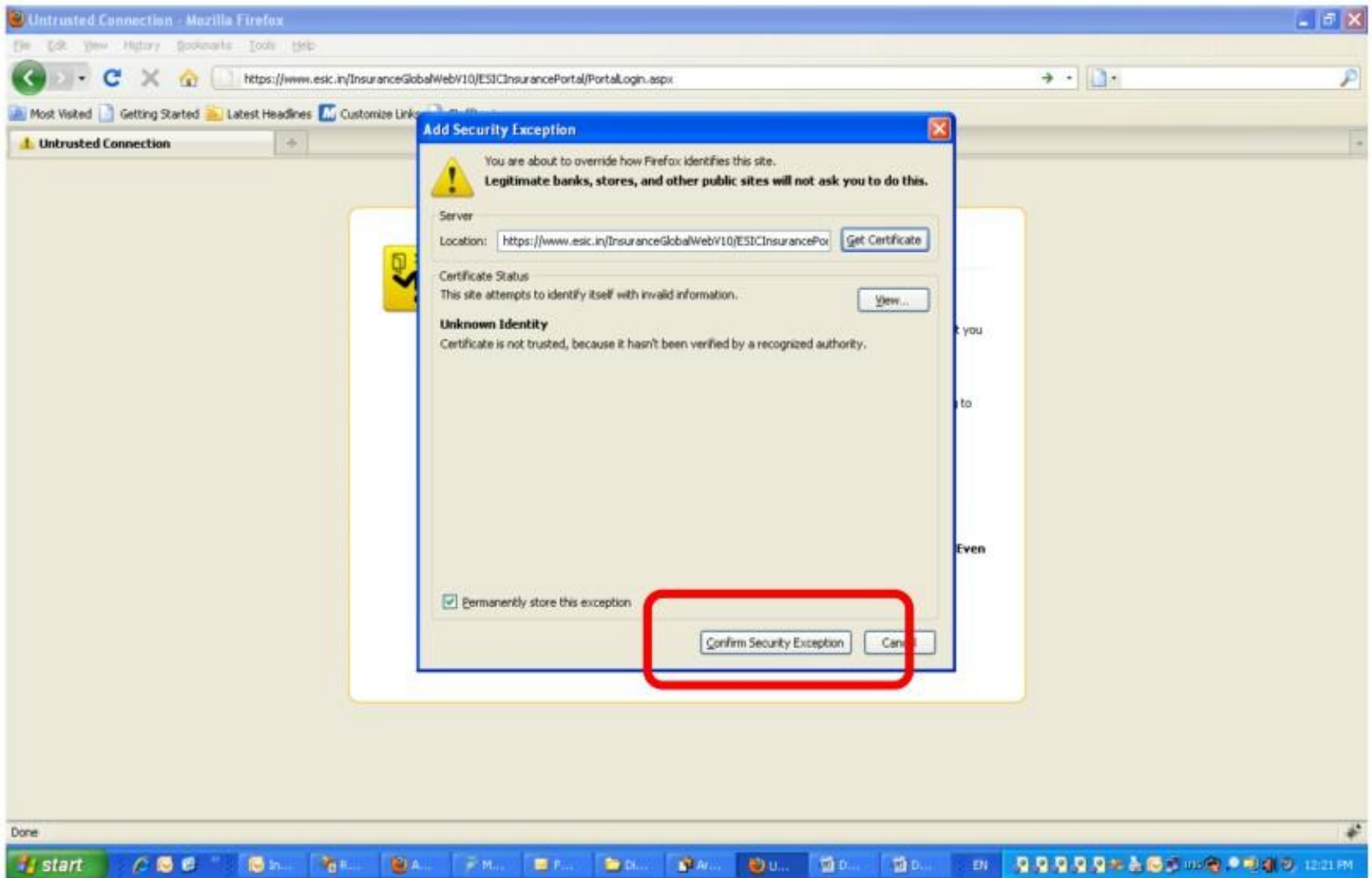
## Steps for Adding security exception in MOZILLA FIREFOX browser.

- Click on “Add Exception” Button



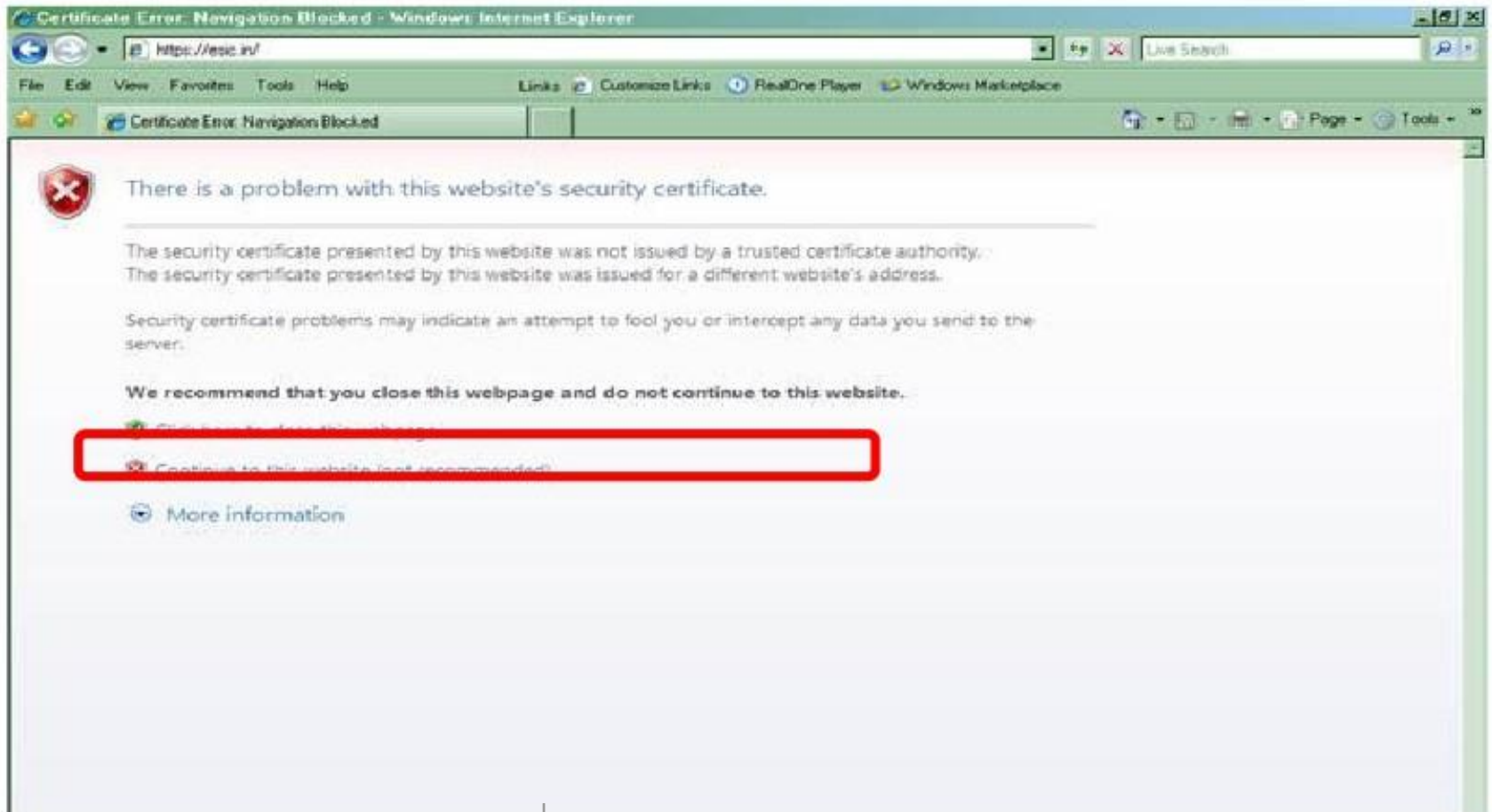
## Steps for Adding security exception in MOZILLA FIREFOX browser.

- “Add Security Exception” opens .
- Click on “Confirm Security Exception”.



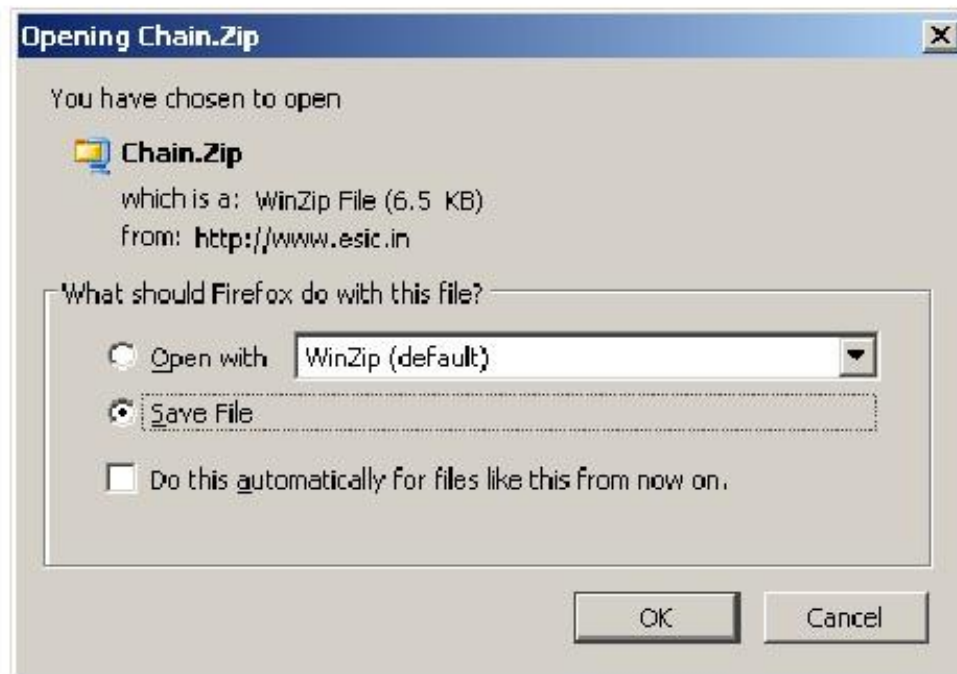
## Steps for Adding security exception in Internet Explorer browser.

- If user is facing Untrusted Connection after entering [www.esic.in](https://www.esic.in)
- Click on **Continue to this website (not recommended)**
- The below process should be followed for following links as well
  - **Generation of Challan**
  - **File Monthly Contribution and**
  - **OnlineChallanDouble Verification**



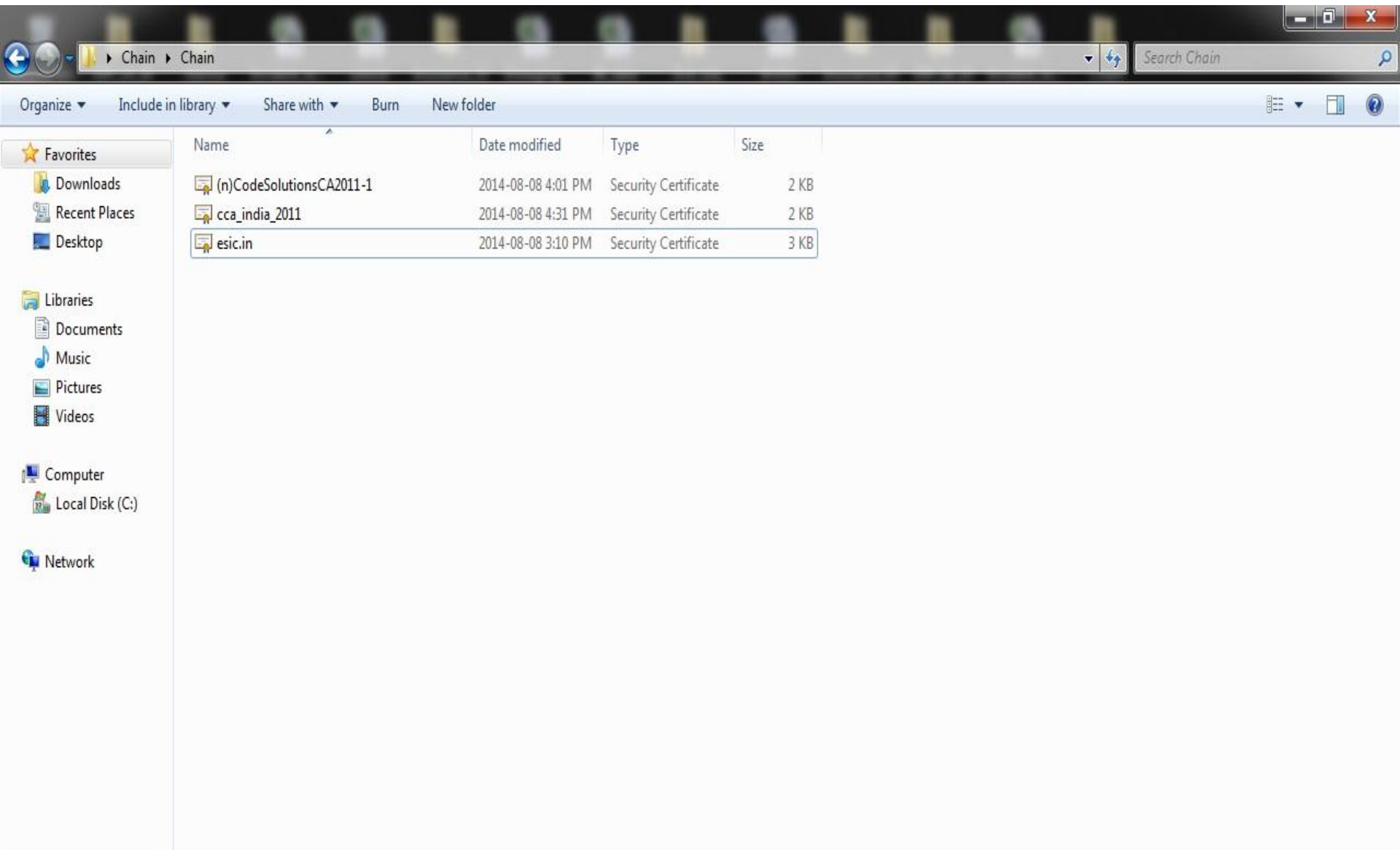
## Installation of Security Certificates

- [Download the Chain.zip](#) and extract to the local folder.





- **Double Click on the file which is „downloaded“ to your computer.**
- **Double Click the first Certificate CCA India 2011**



# Click on "Install Certificate"

The screenshot shows a Windows Explorer window with the following details:

- Address bar: Chain > Chain
- Search bar: Search Chain
- Navigation: Organize, Open, Share with, Burn, New folder
- Left sidebar: Favorites (Downloads, Recent Places, Desktop), Libraries (Documents, Music, Pictures, Videos), Computer (Local Disk (C:)), Network
- File list table:

Name	Date modified	Type	Size
(n)CodeSolutionsCA2011-1	2014-08-0		
cca_india_2011	2014-08-0		
esic.in	2014-08-0		
- Selected file: cca\_india\_2011 (Security Certificate, 1.13 KB)

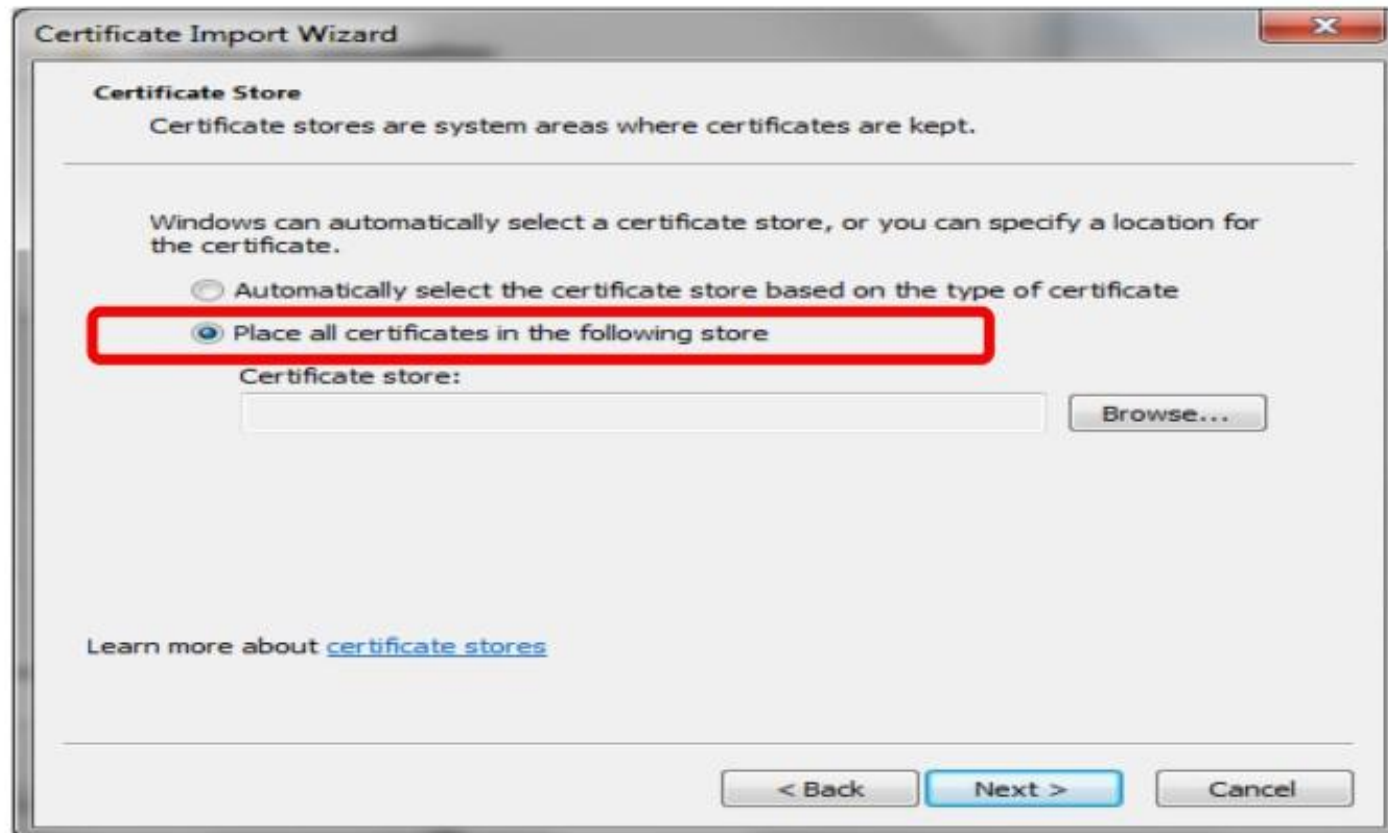
The 'Certificate' dialog box is open, showing the following information:

- Tab: General
- Section: Certificate Information
- Purpose(s):
  - Ensures the identity of a remote computer
  - Proves your identity to a remote computer
  - Protects e-mail messages
  - Ensures software came from software publisher
  - Protects software from alteration after publication
  - Allows data to be signed with the current time
- Issued to: CCA India 2011
- Issued by: CCA India 2011
- Valid from: 2011- 03- 11 to 2016- 03- 11
- Buttons: Install Certificate... (highlighted), Issuer Statement
- Footer: Learn more about [certificates](#)
- OK button

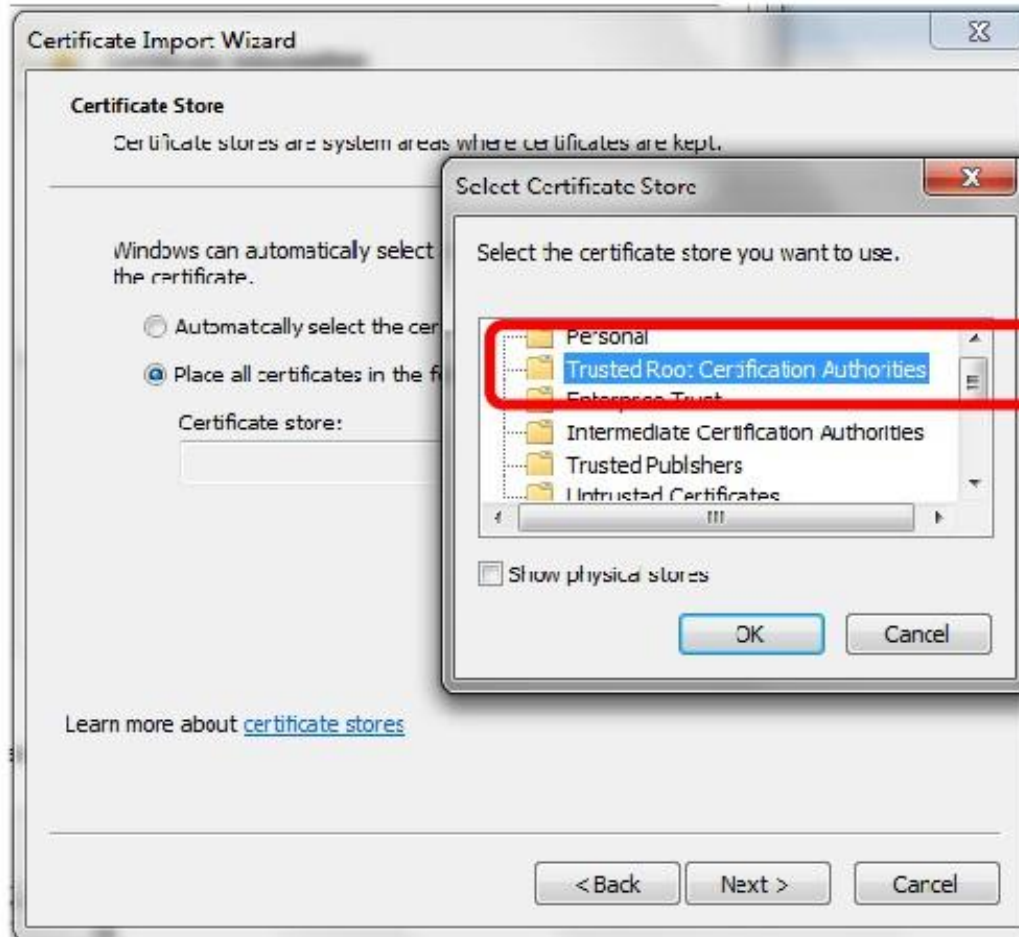
- Certificate Import Wizard will open
- Click “Next” to continue



- Click Next button
- Select “Place all certificates in following store” option and spec

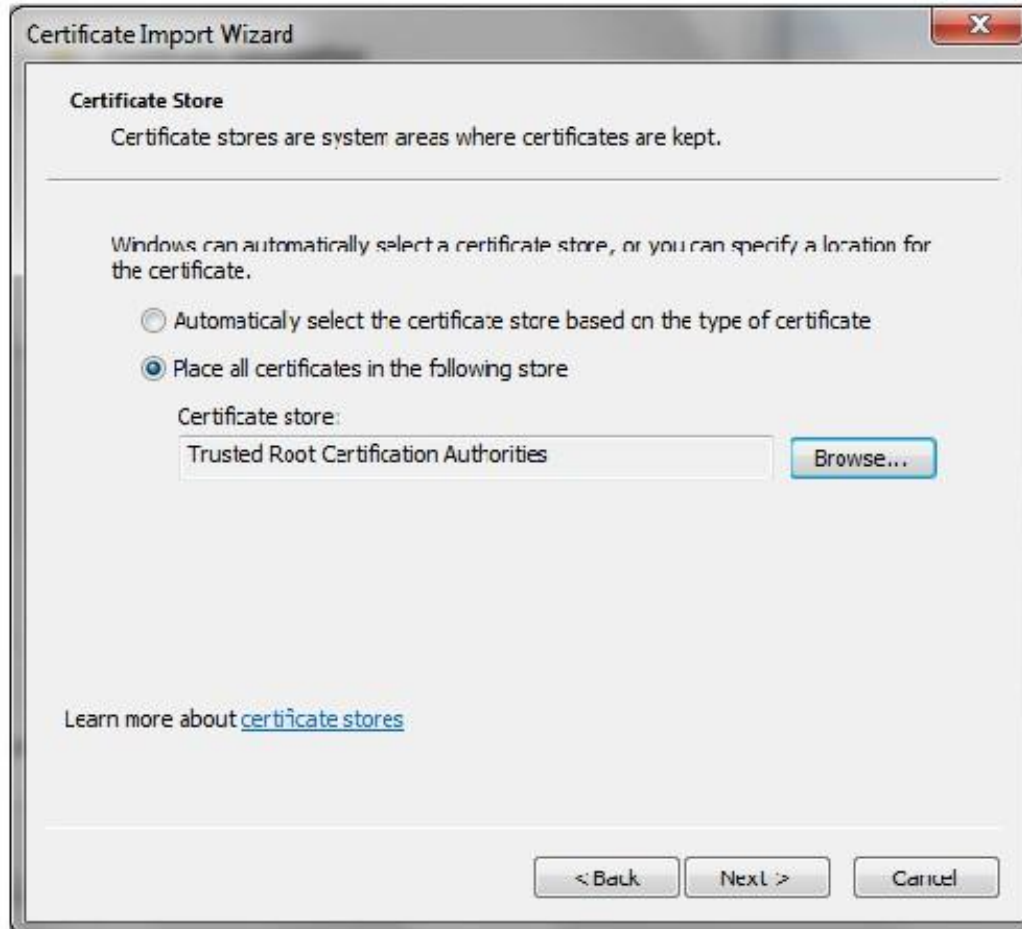


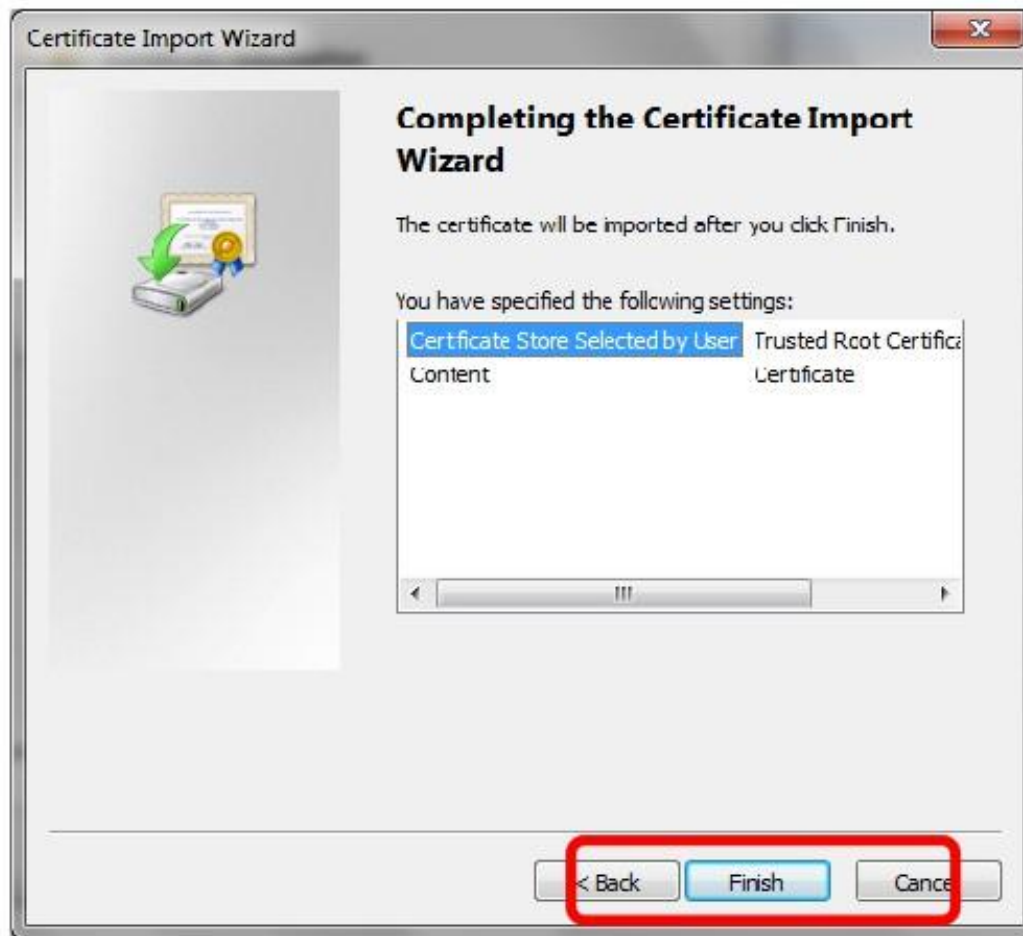
**Click Browse to the select the Certificate Store Path**



- **Select Trusted Root Certification Authorities**

- Click Next





**Click Finish to complete the installation of the selected Certificate**



- Continue the Steps 1 to 10 for the remaining Certificates (n)CodeSolutionsCA2011-1 and esic.in



- Upon Successful installation of all the 3 Certificates. Open Certmgr.msc from the run command.
- Select Trusted Root Certification Authority · Certificates · Select www.esic.in · Double Click · Certificate Path should be as shown below

The screenshot displays the Windows Certificate Manager window titled "certmgr - [Certificates - Current User]\Trusted Root Certification Authorities\Certificates". The window is divided into several panes:

- Left Pane:** Shows the hierarchy of certificates, including "Certificates - Current User", "Personal", "Trusted Root Certification Authorities", and "Certificates".
- Center Pane:** Lists certificates issued to the current user. The "Issued To" column shows "www.esic.in" at the top, followed by various root certification authorities like "CCA India 2011", "(n)Code Solutions CA 2011-1", and "Class 3 Public Primary Certification Authority".
- Right Pane:** Shows the details of the selected certificate, including "Issued By", "Expiration Date", "Intended Purposes", "Friendly Name", "Status", and "Certificate Template".
- Bottom Pane:** Displays the "Certificate status" as "This certificate is OK." and a link to "Learn more about certification paths".

A "Certificate" dialog box is open over the center pane, showing the "Certification Path" tab. The path is visualized as a tree structure:

```

graph TD
    Root[CCA India 2011] --> Intermediate["(n)Code Solutions CA 2011-1"]
    Intermediate --> Leaf[www.esic.in]
  
```

The dialog box also includes a "View Certificate" button and an "OK" button at the bottom.



करुषेति  
**ESIC**  
कर्मचारी राज्य बीमा निगम  
Employees' State Insurance Corporation

# Thank You